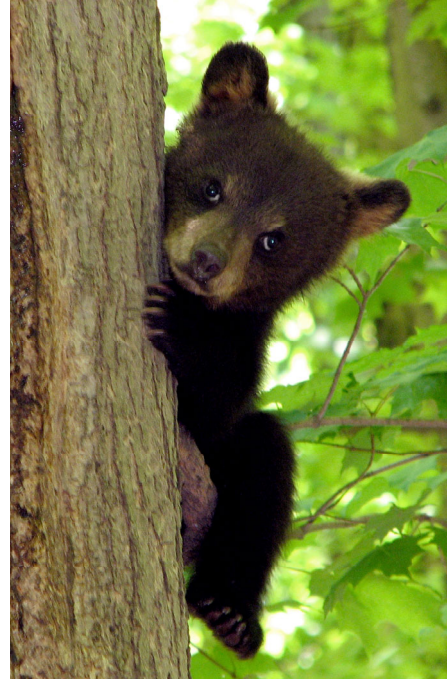


## Be BearSmart... With These Simple Bearproofing Tips

Hang on your  
refrigerator  
as a daily  
reminder!

- ◆ Enclose garbage in an airtight plastic bag and place in a bear-resistant garbage can.
- ◆ Freeze pungent food scraps and keep indoors until day of garbage pickup.
- ◆ Store soiled diapers indoors until trash day.
- ◆ Periodically clean your trash can with ammonia and rinse food containers before putting in trash or recycling.
- ◆ Remove all attractants from your property. Clean BBQ grills immediately after use.
- ◆ Hang feeders at least 12' high between sturdy posts or trees and clean up any fallen seed.
- ◆ Use lime to reduce compost odors.
- ◆ Keep sweets and animal products out of your compost.
- ◆ Feed birds only between November and April.
- ◆ Companion animals should not be fed outside, chained or left unattended. Obey leash laws.
- ◆ Use electric fencing to protect caged and penned companion animals (such as rabbits, goats and chickens), beehives, and valuable trees. Remove all leftover food from cages, pens and kennels.
- ◆ Pick ripe fruit from trees and clean up fallen fruit.
- ◆ Don't leave groceries or other attractants in your vehicle, garage, shed, deck or screened porch.
- ◆ Comply with NJSA 23:2A-14, the black bear feeding ban law.
- ◆ Teach children to respect and stay away from all wildlife.



**Bear resistant cans are available in Passaic and Sussex counties as well as online.**

**Highland General Store**

Highland Lakes, NJ | 973-764-4541

**McAfee Hardware**

Vernon, NJ | 973-827-0594

**Glenwild Garden Center**

Bloomingtondale, NJ | 973-838-0174

**Pequannock Feed & Pet Supply**

West Milford, NJ | 973-728-5151

Order cans/dumpsters directly from

[www.bearicuda.com](http://www.bearicuda.com) | 877-232-7428



---

**Bear Smart New Jersey** is a public service program of Animal Protection League of New Jersey. Our Bear Smart Community outreach program serves to educate residents about bears, reduce unwarranted fears, increase tolerance of our bear neighbors and allows the public to enjoy these beautiful animals and their place in our state.

Being Bear Smart is not complicated. Through simple measures and basic education the incidence of human/bear interactions can be greatly reduced. Modifying your behavior will modify the bear's behavior. When you know what to do, how to properly act and react, the bear will learn from you.

Contact us for more information on providing your community, school, service organization or workplace with a free presentation of *Making Your Community Bear Smart*.

---

Post Office Box 186  
Glen Gardner, NJ 08826  
732-446-6808 option 5  
APLNJ.org | BearSmartNJ.org

